

PCR Reagents and Complete Reaction Kits

NEW: 08138 *Xylophilus ampelinus*



Xylophilus ampelinus is the causing agent of bacterial blight in grapevine (*Vitis vinifera* and *Vitis* spp. used as rootstocks). It affects plants systemically in the xylem and has the ability to overwinter. Typical symptoms on shoots are cankers, which lead to brown discoloration and tissue death. On leaves, necrotic spots surrounded by a halo appear, while spurs fail to sprout, leading to fruit loss. *X. ampelinus* has been reported in most areas of the Mediterranean basin and is listed as a quarantine pest worldwide.

Available now: Complete PCR Reaction Kit or PCR set

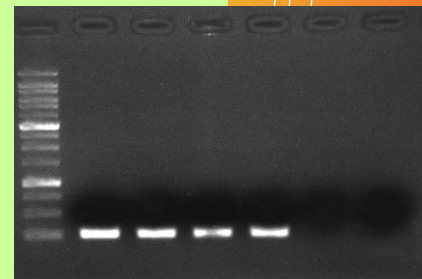
- Sensitive diagnostic method to identify *Xylophilus ampelinus*
- Testing size of 100 samples
- Bacterial colonies diluted in water, as well as DNA isolated from infected plants can be used as template
- All components are pre-tested and are accompanied by a lot-specific certificate and working protocol
- **Ready-to-use; Fast and cost effective**

08138S/100 PCR set for 100 reactions

- ✓ Premix (primers/dNTPs)
- ✓ Positive Control (10 reactions)
- ✓ Negative Control (10 reactions)

08138C/100 Complete PCR Reaction Kit for 100 reactions

- ✓ Premix (primers/dNTPs)
- ✓ Positive Control (10 reactions)
- ✓ Negative Control (10 reactions)
- ✓ DNA-Polymerase
- ✓ PCR Reaction Buffer
- ✓ PCR grade water



References:

EPP0 Bulletin, Volume 39, Diagnostic Protocol PM7/96, 2009
Xylophilus ampelinus primers: Botha WJ, Serfontein S, Greyling MM and Berger K. *Detection of Xylophilus ampelinus in grapevine cuttings using a nested polymerase chain reaction* (Plant Pathology, August 2001).