

LOWEFAST® Lateral Flow Kits for Cucumber Viruses

Fast and easy on the spot detection of the most common cucumber and cucurbitaceae infecting viruses in greenhouses!

Cucumber Green Mottle Mosaic Virus

Cat. No. LF07022



CGMMV belongs to the Tobamovirus group and causes mottling and distortion in cucumber, watermelon and melon leaves. Fruits might not show severe symptoms, but due to plant stunting, yields are significantly reduced.

It can be transmitted by contact between plants, contaminated soil, or seeds.

Cucumber Mosaic Virus

Cat. No. LF07186



CMV belongs to the Cucumovirus group and can infect a great variety of plants including cucumber, squash, and melon. It causes leaf mosaic or mottling, yellowing, ringspot, stunting and distortion of leaves, flowers and fruits.

CMV is mainly transmitted by aphids but it can also be spread mechanically and by seeds.

Melon Necrotic Spot Virus

Cat. No. LF07097

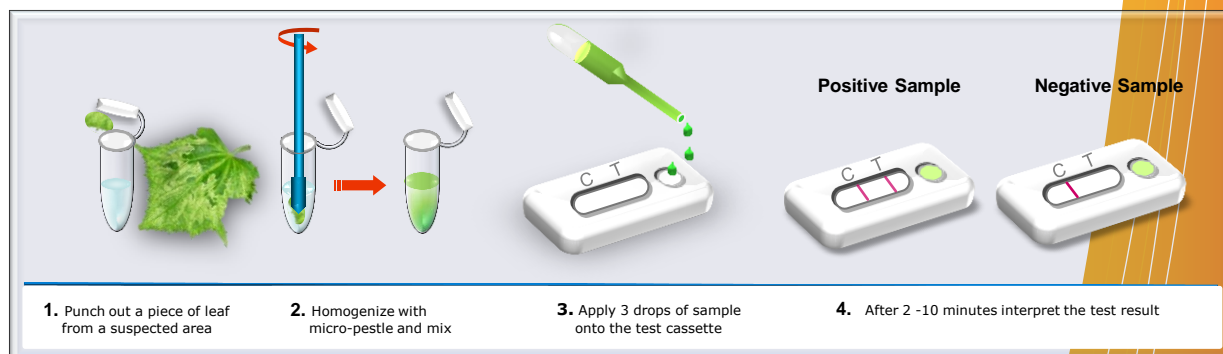


MNSV belongs to the Carmovirus group and causes necrotic spots, streaks on petioles and stems of cucumber, melon, and watermelon. The infection may lead to plant necrosis and yields are significantly reduced.

It can be transmitted by a fungus or contact between plants and contaminated seeds.

Features

- ✓ Fast - easy - on the spot
- ✓ Specific and sensitive detection of plant pathogens within minutes
- ✓ Testing in the field or greenhouse without the need of a laboratory
- ✓ Kits include 4 single-use test cassettes, 4 pre-filled tubes with sample buffer, and 4 single-use pipettes for sample application



Please visit our web-site www.loewe-info.com for order and price information!