

RNA-PCR for Detection and Discrimination of Cucumber Mosaic Virus Subgroups I and II

Our new One-Tube One-Step RNA-PCR for the detection of Cucumber Mosaic Virus provides reliable and sensitive detection of CMV and allows **discrimination between Subgroup I and Subgroup II** CMV isolates depending on the obtained amplicon size.

Family: Bromoviridae – Cucumovirus

Distribution: world-wide

Host range: over 1200 species

Transmission: Aphids

Symptoms: stunted growing, mosaic pattern, reduced size and rugosity of fruits, epinasty

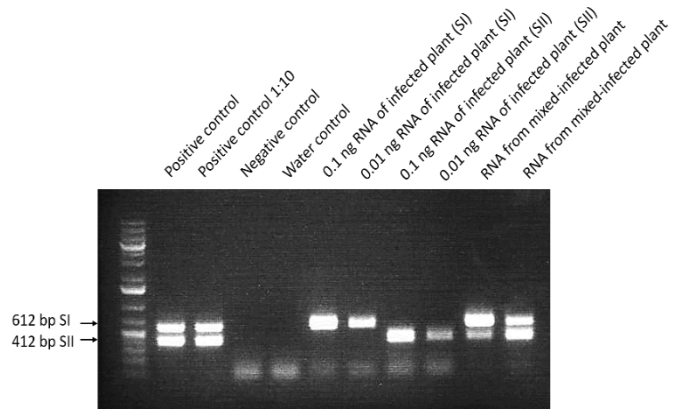


High specificity and sensitivity!

No cross reaction detected with:

AMV, BBSV, BBWV, BCMV, CABYV, CGMMV, CVYV, CYSDV, MNSV, PEBV, PRSV, SqMV, TAV, TMV, ToMV, ToRSV, TRSV, TSWV, WMVII, WSMoV, ZGMMV, ZYMV
and

Cucumis sativus, Cucumis melo, Citrullus lanatus, Cucurbita pepo subsp. pepo, Cucurbita pepo, Solanum lycopersicum, Capsicum annuum, Glycine max, Spinacia oleracea, Lactuca sativa, Phaseolus vulgaris, Musa spp.



Further Literature:

- Zitter, T.A., and J.F. Murphy. 2009. Cucumber mosaic. The Plant Health Instructor. DOI: 10.1094/PHI-I-2009-0518-01

Detection of CMV by LOEWE® RNA PCR complete reaction kits

| 09108 | Cucumber Mosaic Virus I and II Duplex RNA PCR | Size |
|------------|--|-----------------------|
| 09108C/100 | Cucumber Mosaic Virus I and II complete RNA PCR reaction kit | 100 reactions |
| 09108PC | Positive PCR Cucumber Mosaic Virus (DNA-based) specific only for primers provided with 09181C/100 | 1 vial (10 reactions) |
| 09108NC | Negative PCR Cucumber Mosaic Virus (DNA-based) | 1 vial (10 reactions) |

Also available: serological Tools for CMV Detection

| | |
|----------------|---|
| LF07186 | LOEWE®FAST Kit Cucumber Mosaic Virus For rapid detection of CMV in suspected leaves |
|----------------|---|

Rapid Tests

| | |
|--------------|--|
| 07108 | Cucumber Mosaic Cucumovirus DTL/ToRS. CMV DTL/ToRS Artificial mixture DTL/ToRS, detects CMV serogroups 1 and 2 |
|--------------|--|

ELISA SETS and KITS