

**Molecular Diagnostics: One-Tube One-step RNA PCR**

**Prunus Necrotic Ringspot Virus** is a serious plant pathogenic virus affecting mainly species of the genus *Prunus* including Sweet Cherry, Peach, Almond and Plum. It causes ring spot diseases and can negatively affect growth and yield of infected plants. It was first reported in orchard Peach trees in the United States in 1941 and is now found worldwide.



**Family:** Bromoviridae - Ilarvirus

**Distribution:** worldwide

**Host range:** Prunus species (main hosts), Roses, Hop

**Transmission:** grafting, mechanical inoculation, pollen-to-seed, seed

**Symptoms:** chlorosis, necrosis, leaf deformity, and stunting

**Further Literature:**

- o Spiegel, S., Holland, D., Tam, Y., Bar-Yaakov, I., Maslenin, L. and Rosner, A. (2004), Prunus necrotic ringspot virus isolates in stone fruit germplasm accessions and cultivars in Israel. *Annals of Applied Biology*, 144: 229-236.
- o Amari, K., Burgos, L., Pallas, V., & Sanchez-Pina, M. A. (2007). Prunus necrotic ringspot virus early invasion and its effects on apricot pollen grain performance. *Phytopathology*, 97(8), 892-899.

**Detection of Prunus Necrotic Ringspot Virus by LOEWE® RNA-PCR reaction kits**

09052C/100	Prunus necrotic ringspot virus RNA-PCR complete reaction kit	100 reactions
09052PC	Positive PCR Control Prunus necrotic ringspot virus (DNA-based)	1 vial (10 reactions)
09052NC	Negative Control Prunus necrotic ringspot virus (DNA-based)	1 vial (10 reactions)

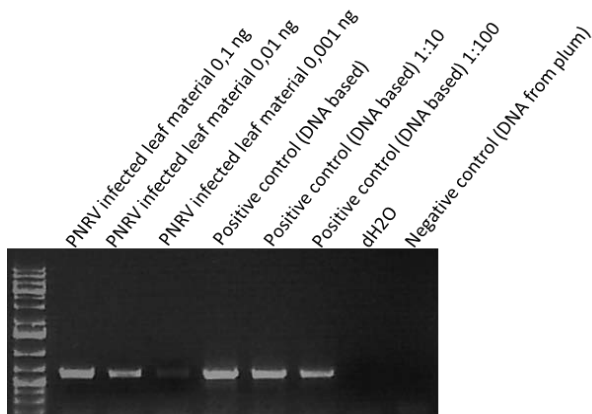
**Highly specific and sensitive detection in samples for woody material, seeds, fruits, blossoms, leaves!**

Cross reactions tested and not detected:

*Apple chlorotic leafspot virus (ACLSV), Apple mosaic virus (ApMV), Apple stem grooving virus (ASGV), Cherry leaf roll virus (CLR), Parietaria mottle virus (PMoV), Prune dwarf virus (PDV), Plum pox virus (PPV), Strawberry latent ringspot virus (SLRV), Tomato black ring virus (TBRV), Tomato ringspot virus (ToRSV)*

Healthy controls tested and not detected:

*Corylus avellana, Cucumis sativus, Humulus lupulus, Lilium spec., Malus spec., Pelargonium spec., Prunus armeniaca, Prunus avium, Prunus domestica, Prunus laurocerasus, Prunus persica, Prunus serrulata, Rosa spec., Rubus fruticosus, Rubus idaeus*



**For more information contact us or visit our web-site: [www.loewe.info.com](http://www.loewe.info.com)**